

# Sonata per Clarinetto e Pianoforte (Dedicated to Kathy Switky)

Musica di Giancarlo Aquilanti

Lentamente  $\bullet = 68$

Clarinetto in Do

Piano

*p* *mf*

Detailed description: This system shows the first two measures of the piece. The Clarinet in C part (top staff) is in 4/4 time and begins with a rest in measure 1, followed by a sixteenth-note pattern in measure 2. The Piano part (bottom two staves) features a continuous sixteenth-note accompaniment in the right hand and a bass line in the left hand. Dynamics are marked *p* (piano) and *mf* (mezzo-forte).

Cl. in do

Pno.

*p* *mf* *f*

Detailed description: This system covers measures 3 and 4. The Clarinet in C part (top staff) has a triplet of eighth notes in measure 3 and a sixteenth-note pattern in measure 4. The Piano part (bottom two staves) continues with the sixteenth-note accompaniment. Dynamics include *p*, *mf*, and *f* (forte).

Cl. in do

Pno.

*mf* *f* *ff* *accel.*

Detailed description: This system covers measures 5 and 6. The Clarinet in C part (top staff) has a dotted quarter note in measure 5 and a sixteenth-note pattern in measure 6. The Piano part (bottom two staves) features a more complex accompaniment with slurs and accents. Dynamics include *mf*, *f*, and *ff* (fortissimo). The instruction *accel.* (accelerando) is written above the Clarinet staff with a dotted line.

*A tempo*

Cl. in do

mf *f* *mf*

Pno.

*f*

Cl. in do

*f* *mf* *p*

Pno.

*p* *mf*

Cl. in do

*f* *p* *p* *mf* *f*

Pno.

*p* *mf* *f*

Cl. in do

*mf*

Pno.

*pp* *mp* *mf*

## II Movimento

Lentamente  $\bullet = 60$

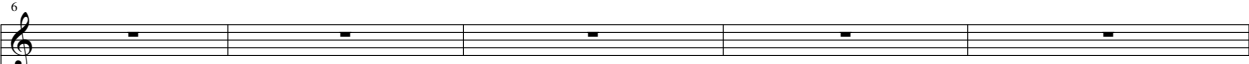
Clarineto in Do



Piano

Musical staff for Piano, measures 1-5. The staff is in 4/4 time. Measure 1 starts with a piano (*pp*) dynamic. The piano part features a melodic line in the right hand and a bass line in the left hand. Measure 5 ends with a piano (*p*) dynamic.

Cl. in Do



Pno.

Musical staff for Piano, measures 6-10. The piano part continues with a melodic line in the right hand and a bass line in the left hand. Measure 6 starts with a mezzo-forte (*mf*) dynamic.

Cl. in Do



Pno.

Musical staff for Piano, measures 11-15. The piano part continues with a melodic line in the right hand and a bass line in the left hand. Measure 11 starts with a *dimin.* dynamic. Measure 12 has a piano (*p*) dynamic. Measure 13 has a pianissimo (*pp*) dynamic.

Cl. in Do

16

*mf* *mp*

Pno.

16

*p* *mp* *p*

Cl. in Do

21

*p* *mp*

Pno.

21

*pp* *mf*

Cl. in Do

26

*pp* *crescendo poco a poco fino alla battuta 36* (*p*)

Pno.

26

*pp* *crescendo poco a poco fino alla battuta 36* (*p*)

Cl. in Do

31

*(mp)*

Pno.

31

*(mp)*

# III Movimento

Mosso con Swing  $\bullet = 148$

Clarinetto in Do

Piano

8vb-----

8vb-----

Detailed description: This system contains the first five measures of the score. The Clarinetto in Do part is a single staff with a treble clef, showing rests in measures 1-3 and 5, and a whole rest in measure 4. The Piano part consists of two staves (treble and bass clefs). In measures 1-3, the piano plays chords and moving lines. Dynamic markings include *mf* and *f*. In measure 4, the piano part is silent. In measure 5, the piano resumes with a *mf* dynamic. An 8vb (8va below) marking is present in measures 1 and 5.

Cl. in Do

Pno.

*mf*  $\leq$  *f*

Detailed description: This system contains measures 6 through 9. The Cl. in Do part is a single staff with a treble clef, showing rests in measures 6-8 and a whole rest in measure 9. The Pno. part consists of two staves. In measures 6-8, the piano plays chords and moving lines. In measure 9, the piano part is silent. A dynamic marking of *mf*  $\leq$  *f* is shown in measure 9.

Cl. in Do

Pno.

*p*

*mf* *f* *p*

Detailed description: This system contains measures 10 through 14. The Cl. in Do part is a single staff with a treble clef, showing rests in measures 10-11 and a melodic line in measures 12-14. A dynamic marking of *p* is shown in measure 12. The Pno. part consists of two staves. In measures 10-11, the piano plays chords and moving lines. In measure 12, the piano part is silent. In measures 13-14, the piano resumes with a *p* dynamic. Dynamic markings of *mf* and *f* are shown in measure 10.

Cl. in Do

16

*mf* *f* *mf* *f*

Pno.

Cl. in Do

24

*mf* *f* *mf* *f*

Pno.

*mf* *f*

Cl. in Do

29

Pno.

*f*

Cl. in Do

34

*mf* *f*

Pno.

*mf* *f*